



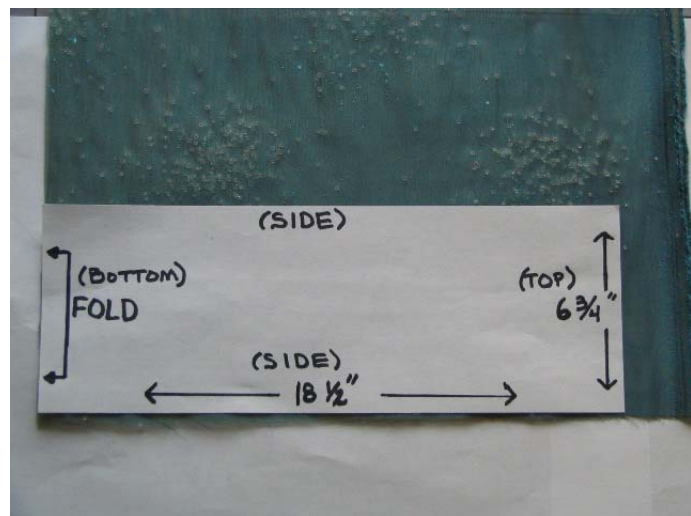
WINE BOTTLE GIFT BAG



What you need:

- Fabric 3/8 yard fancy fabric like an Organza with sparkles (makes 2 bags)
- Thread to match fabric
- Iron
- Pressing cloth
- Interfacing – measuring about 20" x 7" (to make pattern out of)
- Ribbon 1/2 yard for tie around top of bag

Please make sure to always any read pattern instructions a couple of times. It always makes your sewing easier and more enjoyable!



To make your pattern piece, draw a rectangle measuring 18 1/2" x 6 3/4" onto your piece of interfacing, then cut the rectangle out.

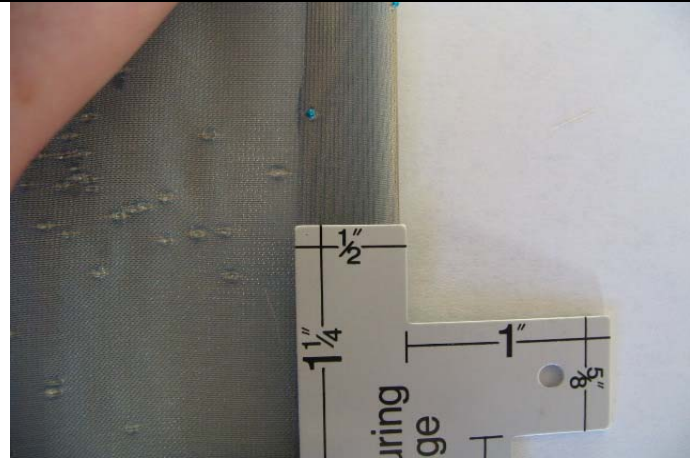
Mark the pattern piece as seen in the picture One 6 3/4" end is to be placed on the fold of the fabric so mark that end with "fold". (this end makes up the bottom of the bag)

Label the other 6 3/4" end as the "top" (this will be the top end of the bag).

Label each of the 18 1/2" lengths as the side. (these will be the side seams of the bag)

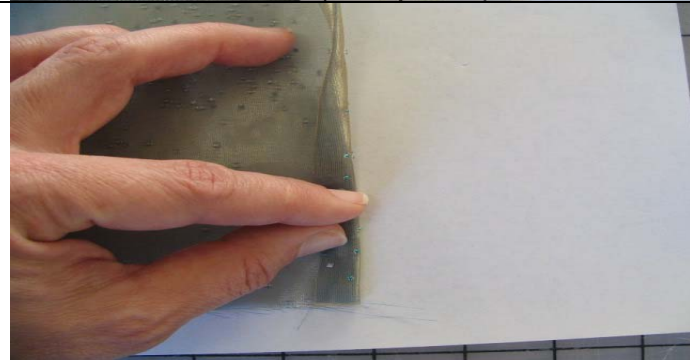
Next, fold your fabric with right sides together, matching up the selvage edges. Place your pattern on the fabric with the fold line of the pattern on the fold of the fabric.

The pattern piece will be running the width of the fabric rather than the length. (Side to side rather than up and down)



The top of the finished bag has a double $\frac{1}{2}$ " hem with topstitching. I found that when handling hard to iron fabrics, such as the organza, it is easier to iron the fold lines of the hem into the fabric before any sewing is started.

Therefore, on one of the ends labeled "top", fold the fabric over $\frac{1}{2}$ " towards the wrong side of the fabric, and iron in a crease (use a pressing cloth to protect your fabric).



Turn over $\frac{1}{2}$ " again and iron another crease; forming a double $\frac{1}{2}$ " hem. Repeat on the other side labeled "top".

Please use the manufacturer's suggested ironing temperature for the type of fabric that you are using. With a dainty fabric like this I suggest using a pressing cloth as well so that the iron doesn't harm the fabric.



Fold the fabric piece in half, right sides together, bringing the two "top" ends together. Now pin down each of the two $1\frac{1}{2}$ " "sides".

With a $\frac{1}{2}$ " seam allowance, sew down each side.

Do not turn the hem down before sewing the side seams. The hem will be folded and topstitched after the side seams are sewn completely from one end to the other.



Turn bag right side out. Now fold the top of the bag towards the inside $\frac{1}{2}$ " and then fold over again $\frac{1}{2}$ ", pin, and topstitch $\frac{3}{8}$ " from the edge of the bag.

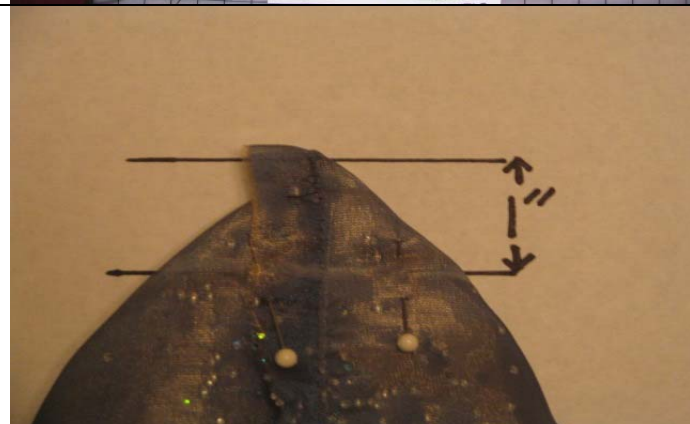
Wasn't it easy turning the hem with the crease marks already in the fabric? It would be a lot harder trying to turn a hem in such a small opening after stitching up the side seams.



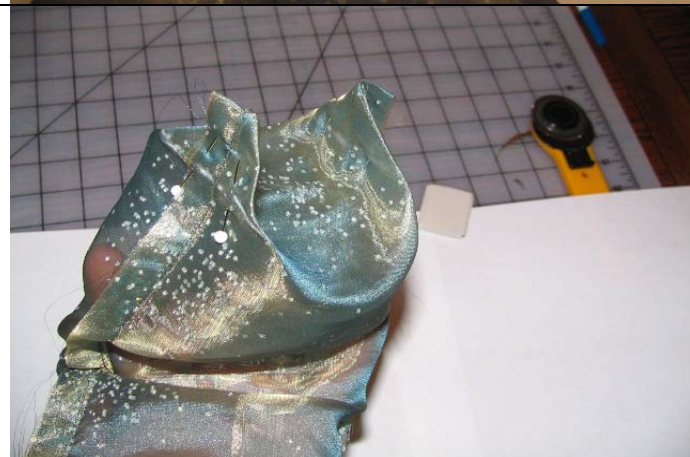
With your bag turned right side out press the side seams flat. Be sure to use some sort of pressing cloth.



Turn the bag inside out. Place your bag on the table with the open end pointing down, and the closed end pointing up. Be sure to place one of the side seams so that it is facing up and running up the center of the bag. Placing it this way creates a point at the closed end.



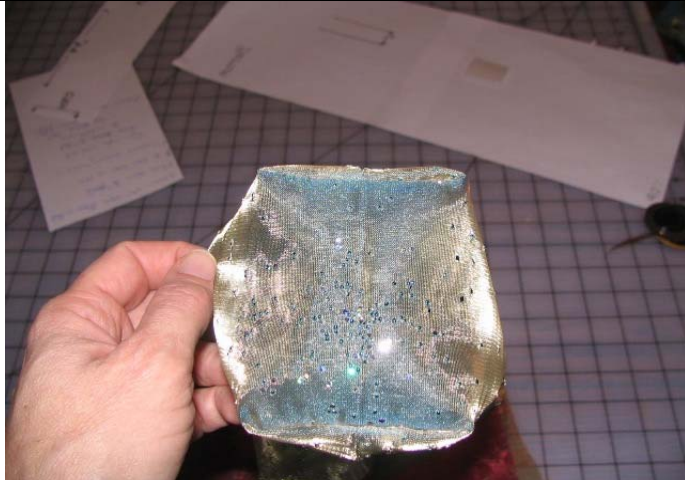
Flatten the point so that it looks like a triangle (the side seam will be running up the middle of the triangle) and pin the two layers of fabric together. Next, measure 1" down from the top of the point, and draw a sewing line across the bottom of the 1" mark. Now turn the bag over and do the same on the other side.



This is what the bottom of the bag will look like with the corners pinned.



Sew across the marked sewing line on each of the two points.



Turn the bag right side out, and look at the bottom of the bag. See how you have a nice looking rectangular base? That's the reason for sewing across the base of the triangles that we created in the last four steps.



Place wine or sparkling cider into a bag and tie a ribbon around the top to close it up.

What a beautiful hostess gift!